

Alaska Department of Fish and Game

Habitat Section
Southeast Region



112-13-10060 Tributary 1

ADDITION

Water body name:

Quad: Sitka D-4

Upper Reach Latitude: 57.996977 **Longitude:** -135.035875

Lower Reach Latitude: 57.995022 **Longitude:** -135.038714

Survey date: 8/24/2022

Species & Lifestage:

Survey crew: RR, FC

Findings: We surveyed this uncataloged stream using a backpack electrofisher and GPS. We captured juvenile coho salmon, Dolly Varden, and cutthroat trout. The tributary stream falls over a 3-to-4-ft log jam and flows under a bridge (Table 1; Figures 1–3).

Recommendations: Add this uncataloged stream to the anadromous waters catalog for rearing coho salmon (Figure 4).

Nomination: Pending

Table 1.—112-13-10060 tributary 1 survey data.

Waypoint	Latitude	Longitude	Notes	Stream Width ft	Stream Substrate	Habitat Features	Gradient %	Sample Effort	Sample Results
1556	57.996981	-135.035941	Bridge over stream; bridge and abutments in good condition. 3-4' log jam ~50' upstream of bridge with a gradient increase to 6-8%; downstream of log jam is ~2-4%. Only resident fish caught above log jam.	6-8	Small Gravel Large Gravel		2-4	EF	2 CO 2 CT 1 DV



Figure 1.—Juvenile coho salmon captured at waypoint 1556.



Figure 2.—Downstream view of tributary 1 from underneath bridge at waypoint 1556.



Figure 3.—Log jam upstream of bridge at waypoint 1556.

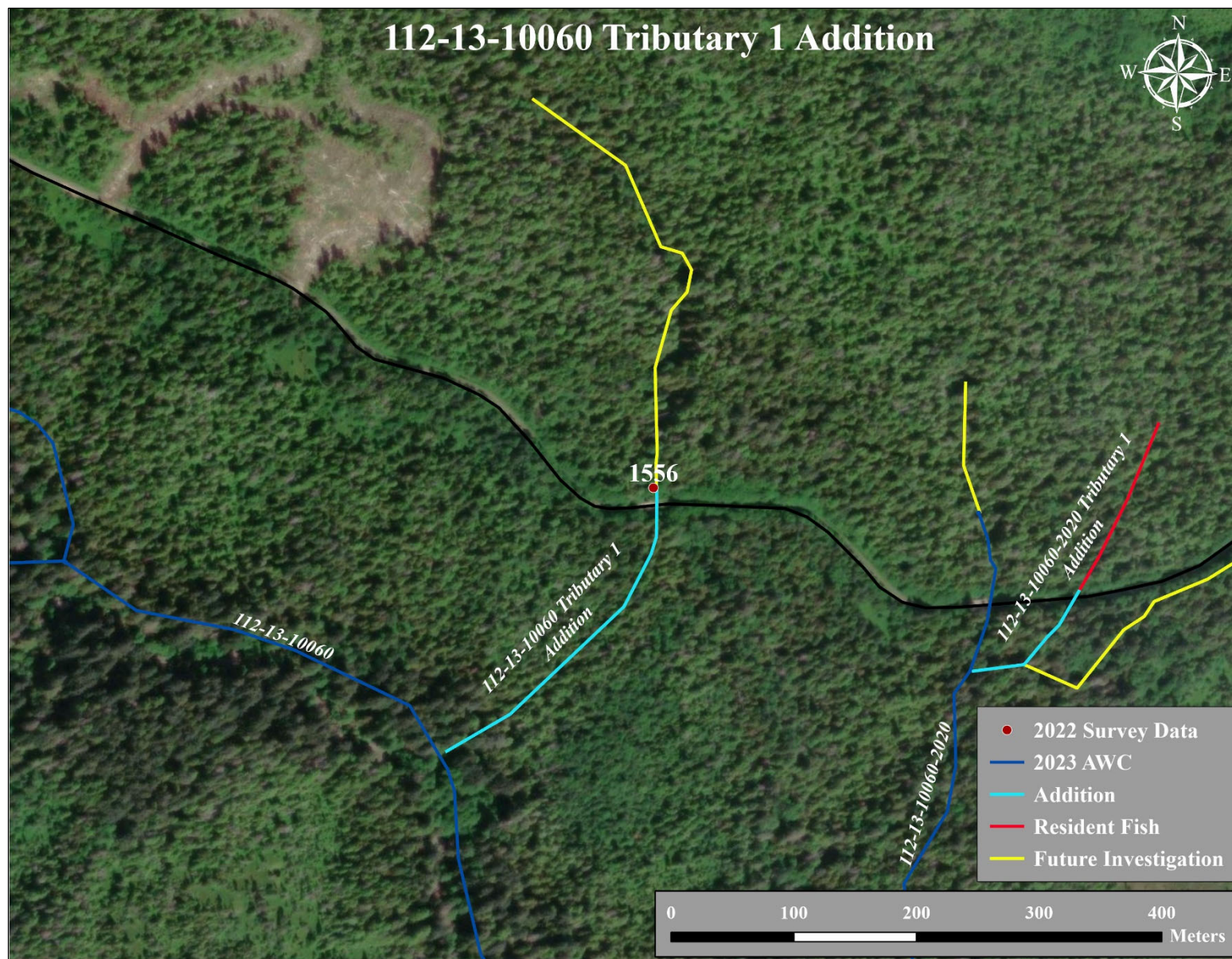


Figure 4.—112-13-10060 tributary 1 addition map.